

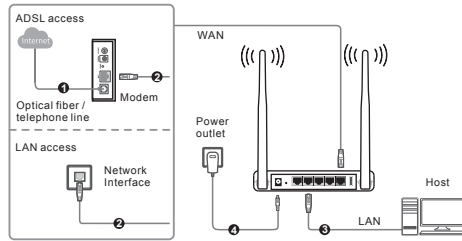
# Wireless Router

## Installation Guide



### I. Hardware Connection

Please connect wired network as shown in the figure for the first-time configuration.  
ADSL users please follow steps 1,2,3,4 and LAN users please follow steps 2,3,4, directly connect network cable to router WAN port.



After connection finished, please check the indicator status:

LED	Description	Status	Description
	Power	Bright Blue	Device working
	WiFi	Bright Blue	function enabled
1 2 3 4	LAN	Bright Blue	LAN port connected properly
	WAN	Bright Blue	Wan port connected properly
	USB (when insert the USB adapter)	Bright Blue	USB adapter connected properly

#### Warning!

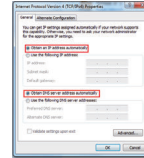
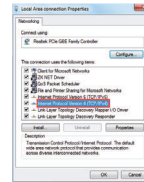
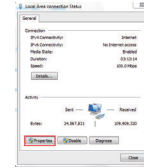
1. Please unplug the power and all connections in thunderstorm weather in case the lighting damage.
2. Away from heat, keep ventilation.
3. Protect it from water during store, transport and operate.
4. Do use device rated power adapter.
5. Place the device on flat and level surface.

### II. Computer settings

IP setting please refer to the steps below if computer connect router via wired network.

#### Settings for Windows 7/Vista OS:

1. Click "Start" -> Control Panel -> Network and Sharing Center -> Change adapter settings -> Local Area connection, click "Local Area connection", choose "Properties".

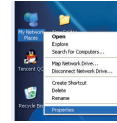


2. Double click "Internet Protocol Version 4 (TCP/IPv4)".

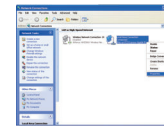
3. Choose "Obtain an IP address automatically" and "Obtain DNS server address automatically". Click "OK".

#### Settings for Windows 2000/XP OS:

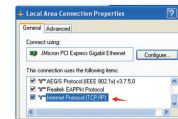
1. Right click "My network places", choose "Properties".



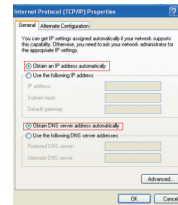
2. Right click "Local Area Connection", choose "Properties" -> double click "Internet Protocol (TCP/IP)" as pic:



3. Double click "Internet Protocol Version 4 (TCP/IPv4)".

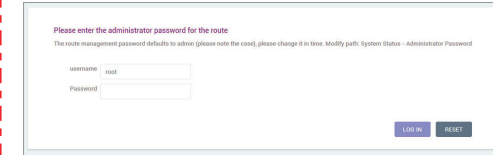


4. Choose "Obtain an IP address automatically" and "Obtain DNS server address automatically", Click "OK".

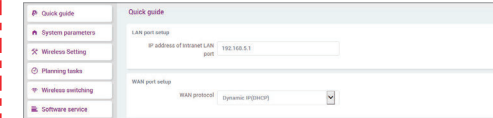


### III. Basic configuration of router

1. Please login on mainstream browser like Firefox, IE9, Google etc. Input 192.168.5.1, enter User name: root, Password: admin, click "LOGIN".

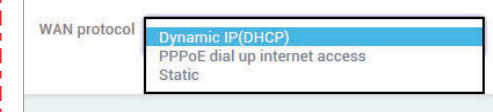


2. After logging in to the router settings interface, go to the Quick Guide.

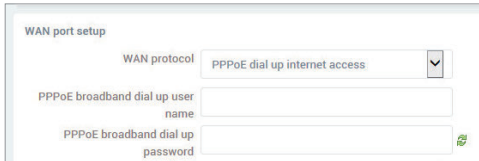


3. Here please set the WAN port connection way and wireless parameter as needed.

A: If WAN port directly connect with upper router LAN port, WAN Protocol please choose "Dynamic IP (DHCP)", then click "SAVE & APPLY" button.



B: If internet access via ADSL, please choose "PPPoE dial up internet access", input broadband User name and Password, then click "SAVE & APPLY".



### IV. Repeat signal with external WiFi usb adapter (For router with usb interface only)

(Note: The router currently support usb adapter with RT3070, RT3072, RTL8188RU and RTL8811 chipsets and support to repeated SSID name in English only.)

1. In any cases, please do insert the WiFi usb adapter first before power the router. Or else, the WiFi usb adapter can't be recognized, and the previous connection record will be cleared.

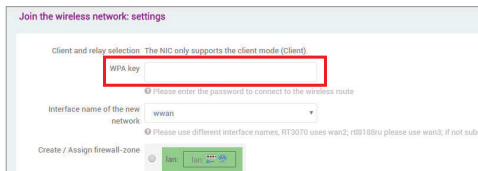
After router boots on, enter the configuration page, click "Wireless Setting" on side menu. If the WiFi usb adapter loaded successfully, the page below will be found, click the second "SEARCH SIGNAL" button.



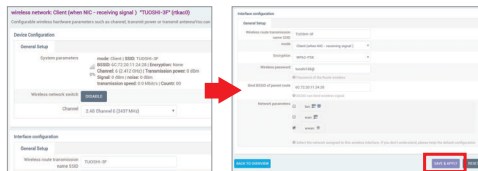
2. Find the hotspot from list and Click "JOIN THE NETWORK". If hotspot is not found, please rescan.



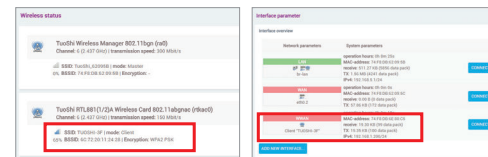
3. Input the correct password, leave it blank if not encrypted, click "SUBMIT" button.



4. Do not change any router parameter here, click "SAVE & APPLY" button.



5. Now the signal strength can be found on the setting page. Click "Network parameters" -> "Interface parameter", if wlan has obtained the IP address, the internet is available.

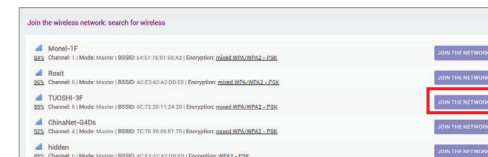


### V. Repeat WiFi with router

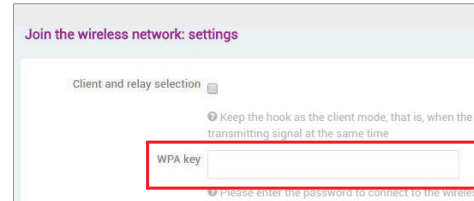
1. Click "Wireless Setting", then click "SEARCH SIGNAL" button



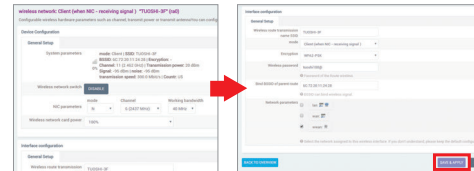
2. Find the hotspot from list and Click "JOIN THE NETWORK".



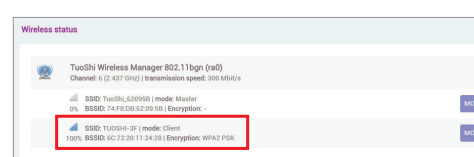
3. Do NOT tick the "Client and relay selection", just Input password or leave it blank if no password, then click "SUBMIT".



4. Keep the other parameter default, click "SAVE & APPLY" button.

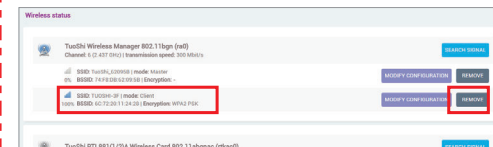


5. Now the signal strength can be found on the setting page.



7. To switch signal please remove the previous one first, then rescan and connect the new hotspot, reboot the router.

(Note: Repeat with External WiFi usb adapter doesn't need to remove old signal, just rescan and connect the new one.)



### VI. Reset Router

1. When router is power-on, press reset button on router for 8-10 seconds then release. When all leds on router light up means reset finished. The router will reboot automatically.

2. Click "Backup/ Firmware" on side menu, click "SYSTEM RECOVERY" button. It takes about one minute to reset.